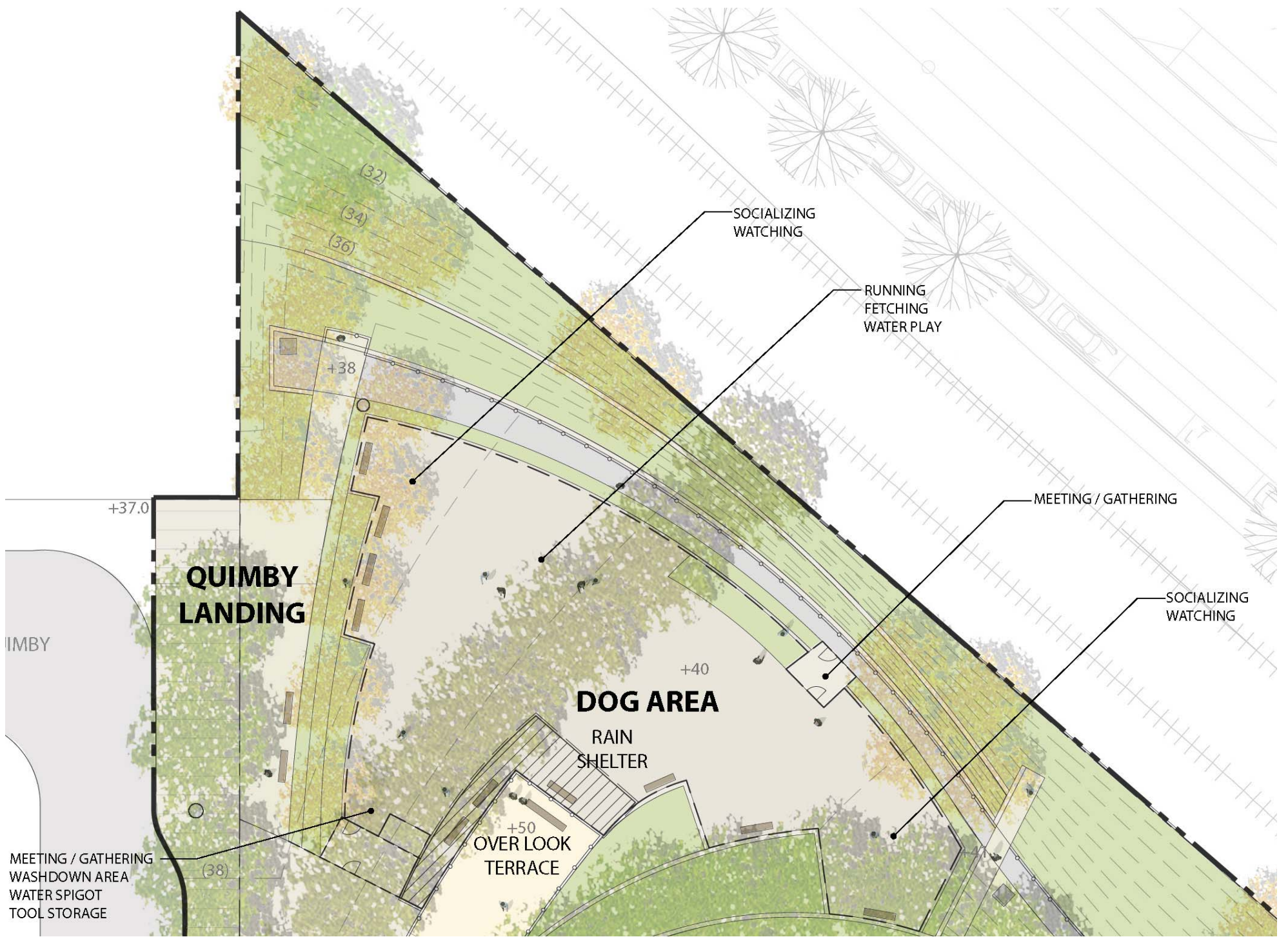


THE FIELDS NEIGHBORHOOD PARK

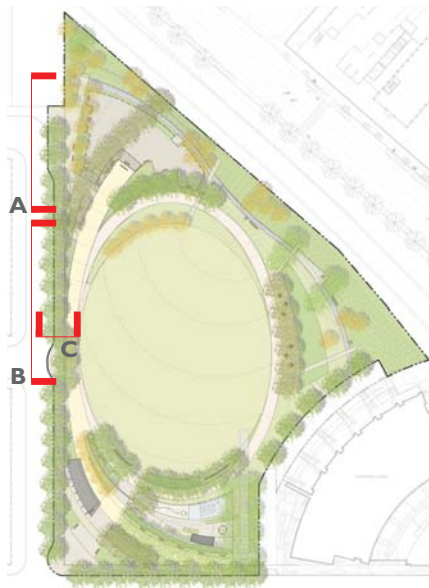
SCHEMATIC PLAN



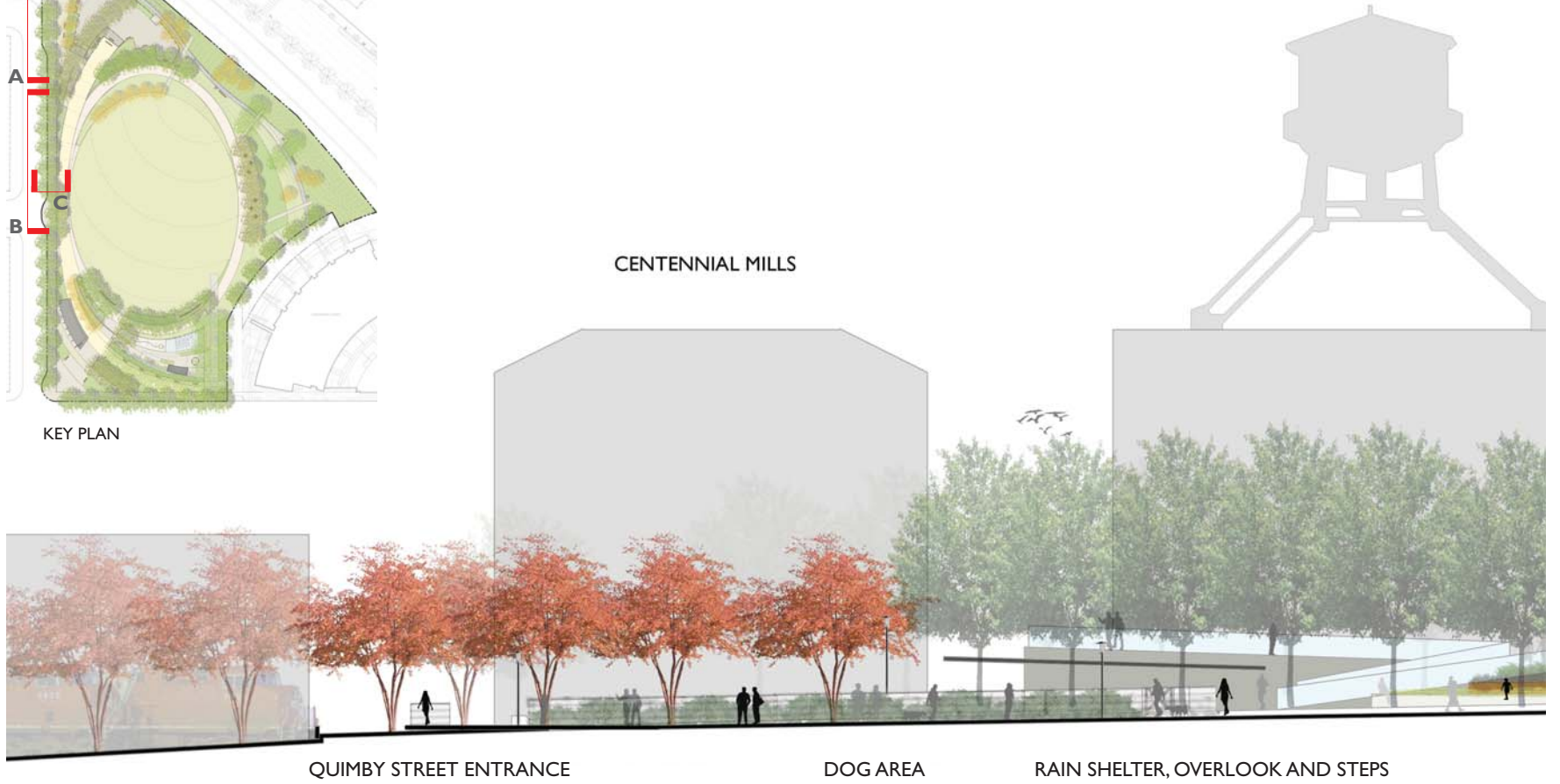
THE FIELDS NEIGHBORHOOD PARK

DOG AREA





KEY PLAN



QUIMBY STREET ENTRANCE

DOG AREA

RAIN SHELTER, OVERLOOK AND STEPS

SECTION A: QUIMBY LANDING AND DOG RUN (FROM 11TH STREET)



TERRACED GARDEN WALLS

BRIDGE / OVERLOOK ACCESS WALK

PETTYGROVE STREET ENTRY PLAZA

SECTION B: PETTYGROVE LANDING AND OVERLOOK WALK (FROM 11TH STREET)



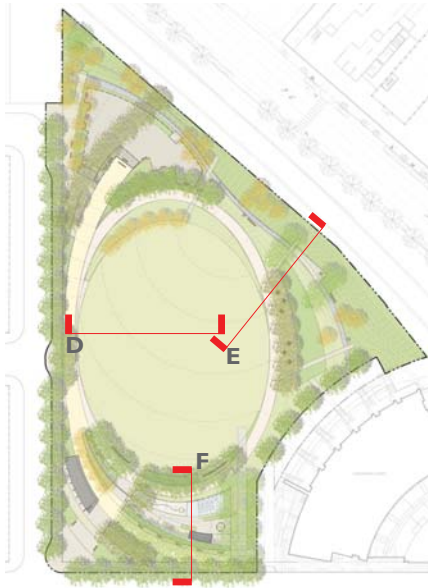
11TH STREET

SIDEWALK

ENTRY PLAZA

THEYARD

SECTION C: PETTYGROVE LANDING (LOOKING NORTH)



KEY PLAN



OVERLOOK ACCESS WALK    CENTRAL GRASSED OPEN SPACE    OVERLOOK    ELLIPSE WALK

SECTION D: THE YARD (LOOKING NORTH)



ELLIPSE WALK    "URBANOLGY" TRAIL    PORTLAND RAILROAD COMPANY

SECTION E: EAST EDGE OF PARK (LOOKING NORTH)



NW OVERTON STREET    RAIN SHELTER    RIVER HABITAT    ELLIPSE WALK    THE YARD

SECTION F: CHILDREN'S AREA (LOOKING WEST)



# The Fields Neighborhood Park

When development is complete, Portland's River District Urban Renewal Area, known as "The Pearl," will have a set of three parks running between 10th and 11th Avenues, north from NW Johnson to the Willamette River. We have Jamison Square and Tanner Springs Park. Now it is time to put the final touches on the design for The Fields.

An Advisory Committee was appointed to guide the development of The Fields Neighborhood Park in March 2007. This group, consisting of neighborhood residents and members of the business community, was tasked with guiding the development of a design that represented a balanced and thoughtful approach to meeting the needs of a new and quickly growing neighborhood.

From April 2007 through October 2007, the public was asked – how do we want to use this park? Hundreds of residents provided feedback through two Open Houses, an interactive Design Workshop and public surveys. The Park Program and Design Principles have guided the development of the design.

## Park Program

- Unstructured Open Space
- Sitting Areas/Strolling Paths
- Entry Plaza(s)
- Water Element
- Children's Area Younger/Older
- Dog Area Small/Large
- Trees and Planted Areas
- Boardwalk
- Bridge

## Design Principles – Common Themes

- Civic Purpose – See the River!
- Connectivity – Access To and Through
- Spatial Counterpoint – Large Open Space
- History Revealed – River and/or Rails
- Design Simplicity – Focused Activity Zones
- Sustainable Urbanism – Healthy Park/City

## Schedule

Schematic Design	January – February 2010
Design Development	March – May 2010
Construction Documents	June – October 2010
Bid and Award	November 2010 – February 2011
Construction	March – October 2011
Park Dedication	June 2012

## Your Comments

Your comments will be used to refine the Schematic Design and to meet our \$3.15 million budget. Please pick up and complete a comment form while you are here.

You can also comment online by going to [www.portlandparks.org](http://www.portlandparks.org)

We look forward to seeing you at the Park Dedication!